



NIL Remote Labs TECHNICAL REQUIREMENTS

NIL Remote Labs products have been developed to make your training experience simple to implement. To successfully use NIL Remote Lab products, you must:

- Meet NIL Remote Lab hardware and software requirements; use an approved browser and system platform as listed in the System Requirements tables below.
- Have 28.8 kbps or faster internet connection.
- Accept browser cookies.
- Enable Java and Java Script on your Web browser.
- Enable Active X on your Web browser.
- Have Telnet client that can be launched from the Web browser. For Windows users some Telnet clients like HyperTerminal may have problems running multiple instances. Telnet access is also possible through a special Java applet provided on the NIL Remote Lab site.
- Set your browser to refresh at every page.

1. SYSTEM REQUIREMENTS

Hardware/Software Minimum Requirements	
Processor:	Pentium 90 MHz or better, or Macintosh PowerPC*
RAM:	32 MB (64 MB recommended)
Screen Resolution:	800 x 600 or higher, 256 colors
Modem Speed:	28.8 kbps

* - Labs that include Virtual PCs are not supported on Macintosh

Supported Systems Platforms	Supported Browsers
Windows 95/98/2000/NT/XP	Microsoft Internet Explorer 5.0 or higher
Macintosh OS 9.0, OS X	Netscape Communicator 6.2.3 or higher
UNIX	

Minimum Application/Plug-in versions
Adobe Acrobat Reader 5.0



NEW USER DIRECTIONS

2. NIL Remote Lab PRODUCTS AND FIREWALLS

A firewall is a system designed to prevent unauthorized access to or from a private network. If you access the Internet from behind a company firewall or proxy, you might not be able to access parts of NIL Remote Lab site from your computer. Company firewalls sometimes block Java and JavaScript, or won't let you log in to a secure server. The following applies:

- Access to the Internet directly or through a non-proxying firewall.
- Network Address Translation (NAT) and Port Address Translation (PAT) firewalls are supported.
- For labs that require Telnet access, access to the equipment is possible even through a Web proxy (that does not block Java applets or deny login to a secure server) with a special Java applet.
- You have to have access to the following hosts/ports:

Host name	IP address	Ports
e-learning.nil.com	193.110.145.37	80, 443, 24097
labX.nil.com*	193.110.145.64-126	2000-2100, 4000-4100
tsX.nil.com**		2000-2100

* - labX stands for lab10, lab11, lab12 and so forth.

** - tsX.nil.com stands for ts12, ts14, ts15 and so forth.



NEW USER DIRECTIONS

3. BROWSER CAPABILITIES TEST

To test your system and browser for NIL Remote Lab experience, the Browser Check application is available. This application runs a detection script on your browser that tests for Java and JavaScript, your browser version, IP address and Telnet session establishment. This test checks the labs for access without a blocking firewall system. The Browser Check application (Figure 1.) is available at http://e-learning.nil.com/browser_check URL.

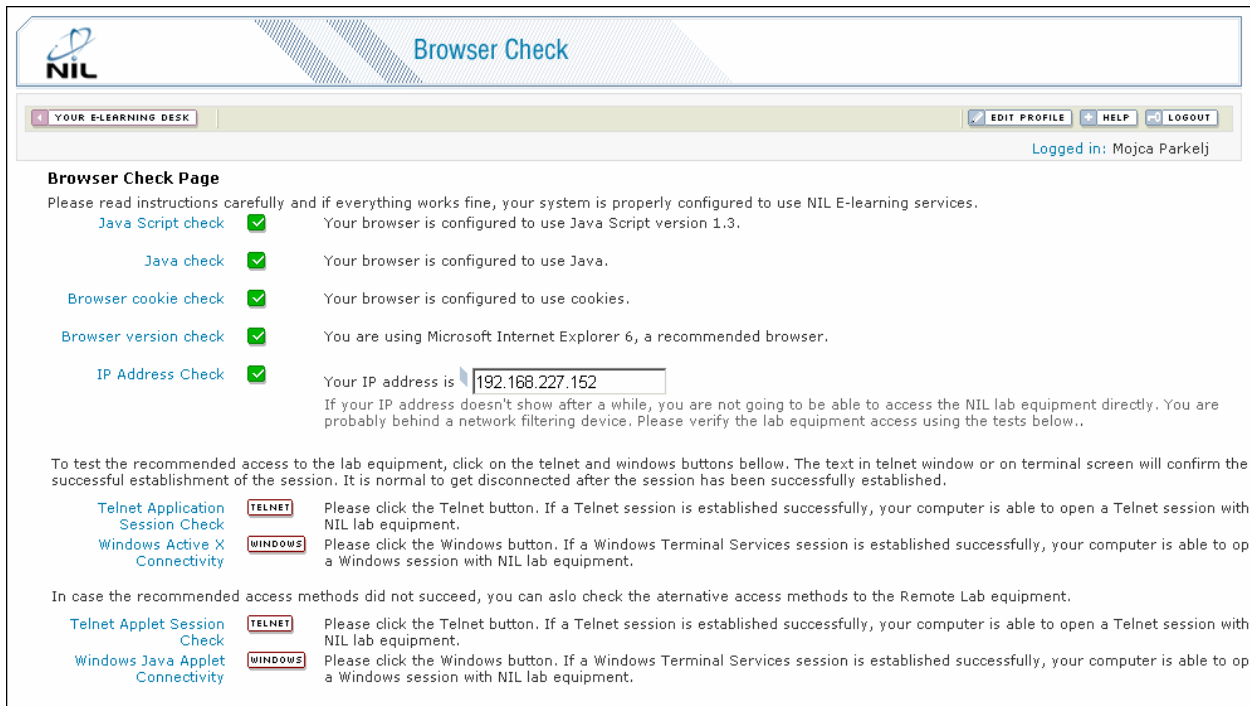


Figure 1.